



# GAT MONTHLY MEMBERSHIP PROGRESS REPORT

Results as of: 5/31/2024

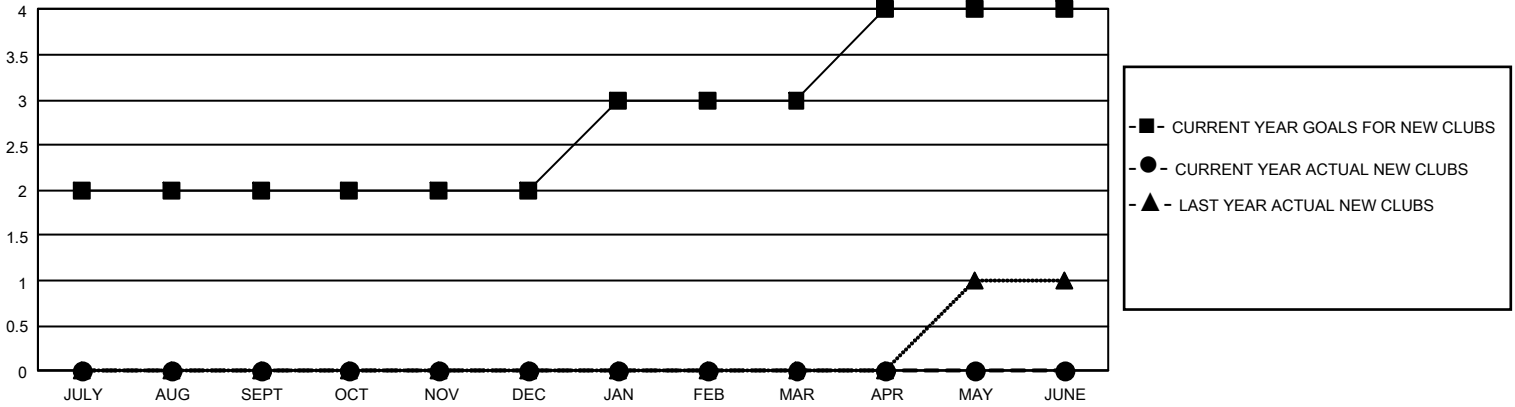
## GMT Constitutional Area 8, Group C

REPORT DOES NOT INCLUDE CLUBS IN UNDISTRICTED AREAS.

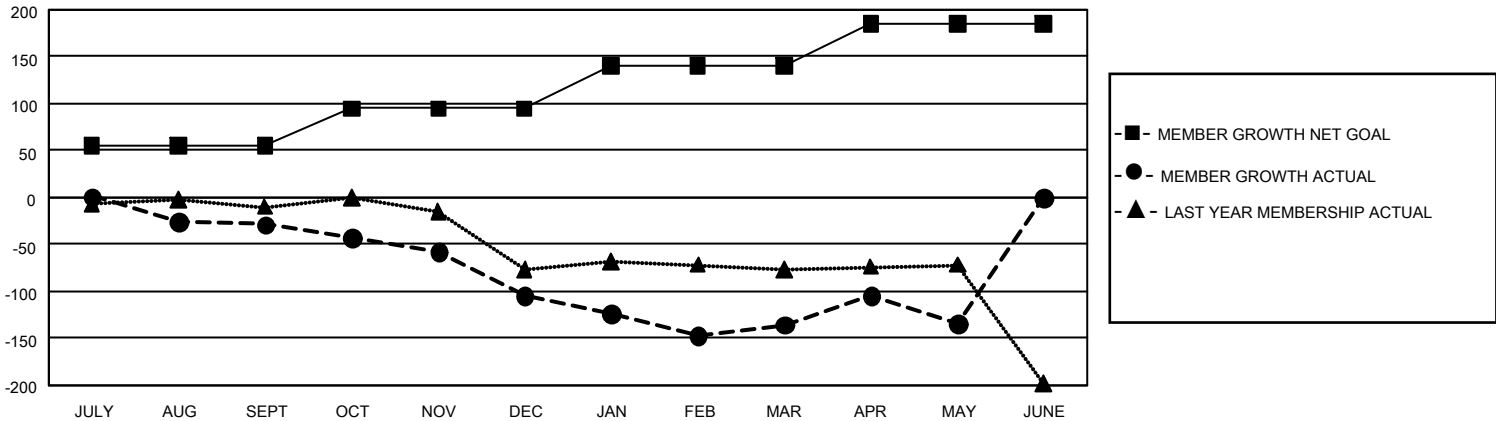
Clubs			
RESULTS FOR 2023-2024			
QUARTER	NEW CLUB GOAL	NEW CLUBS	DROPPED CLUBS
JULY/AUG/SEPT	6	0	2
OCT/NOV/DEC	0	0	2
JAN/FEB/MAR	3	0	0
APR/MAY/JUNE	3	0	1

Members			
RESULTS FOR 2023-2024			
QUARTER	MEMBER GROWTH NET GOAL	MEMBER GROWTH ACTUAL	DROPPED MEMBERS ACTUAL (including transfers)
JULY/AUG/SEPT	55	84	83
OCT/NOV/DEC	40	55	117
JAN/FEB/MAR	45	57	76
APR/MAY/JUNE	45	84	74

GOALS AND ACTUAL NEW CLUBS CUMULATIVE



GOALS AND ACTUAL MEMBERS CUMULATIVE



<b>DROPPED CLUBS: 5</b>  <b>DROPPED MEMBERS</b> DECEASED 24 CLUB CANCELLED 7 OTHER 319 <b>TOTAL 350</b>	70 CLUBS OF 123 ADDED 1 OR MORE NEW MEMBERS	<b>GENDER DISTRIBUTION</b> MALE 902 (51.05%) FEMALE 864 (48.90%) NON BINARY 0 (0.00%) PREFER NOT TO ANSWER 1 (0.06%)
	<a href="#">CLICK HERE FOR CUMULATIVE MEMBERSHIP DATA</a>	TOTAL FAMILY UNIT MEMBERS 488 FAMILY MEMBERS PAYING HALF DUES 257